

LIVING ON CAMPUS

The transition to college is a big one. College is not just about academic growth but also about your personal growth. The residential experience at Parkside is designed to help **you** become who you want to be.

Major in you.

UNIVERSITY OF
WISCONSIN **PARKSIDE**

Your Involvement.

A group of four students, two women and two men, are participating in a field activity. They are wearing waders and are standing in shallow water, possibly a stream or a wetland. One woman in the center is holding a large brown paper bag, and another woman to her left is holding a long-handled tool. The background shows tall grasses and a wooden structure.

Staying active and involved is a key part of a first-class education. Parkside offers opportunities for you to develop leadership skills, expand your social network, and gain new experiences. From academic and service organizations to sororities and fraternities, professional and special interest organizations to intramural sports, Parkside has something for everyone. Living on campus puts you in the middle of the action and the fun!

Your Connections.

Living on campus puts you at the center of daily university life! On campus you're a short walk away from classes, professors, the library, academic resources, recreation facilities, a Rangers game or an organization meeting. All classes are less than a 10-minute walk away so you can roll out of bed, brush your teeth, and head off to class.

Your Experience.

Enhance your experience with learning programs provided by the RA staff and Residence Hall Association (RHA) as well as convenient tutoring through the Parkside Academic Resource Center (PARC).

Students who live on campus frequently:



HAVE A
HIGHER GPA



FEEL MORE CONNECTED
TO THE CAMPUS



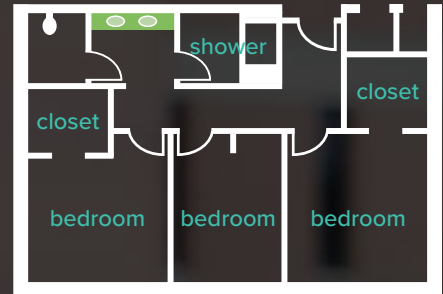
HAVE HIGHER
GRADUATION RATES

Your Home.

We know it's important that you're comfortable where you live, so our residents can request from three kinds of living environments.

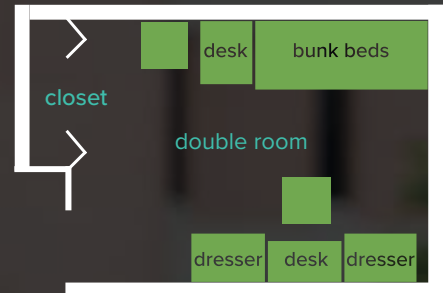
Pike River Suites

Pike River Suites is the newest residence hall at UW-Parkside. A suite-style community with two bedroom and three bedroom suites, with a private bathroom, for up to five students.



Ranger Hall

Ranger Hall is home to a mix of first-year and upper class students living on campus. Each room in this traditional-style residence hall is designed for up to two students.



All Housing Amenities

- Air conditioning
- Wi-Fi in all rooms
- Computer labs
- Exercise room
- Kitchen
- Quiet study lounges
- Basketball and volleyball court
- Variety of living options

University Apartments

The University Apartments consist of seven separate buildings. Each apartment houses up to six upperclass students, and includes a kitchen, two single-rooms, two double-rooms, and two bathrooms.



Your Options.

With five dining locations, you have a selection of dining options to fit your specific dietary choices, cravings, and social experiences.

Brickstone Grill & Eatery

The Brickstone offers food that will remind you of home plus some sure favorites—made to order deli sandwiches, fresh grilled burgers, gourmet pizzas, soups and salads made from scratch, international sautéed entrées, and vegetarian options. No meal would be complete at the Brickstone without one of our tasty desserts.

The Encore

Like coffee house coffee? This coffee shop proudly brews Starbucks® and carries some of their products including Espresso, Cappucino, Café Mocha, and Café Latte. There's also great bakery and grab-and-go items.

Wyllie Market

On the go and need a quick bite to eat? Wyllie Market has something for everyone from grab-and-go snacks to homemade salads and soups. WM also features an Erbert & Gerbert's Sandwich Shop with bold sauces on every item, and the Starbucks Coffee Station is complete with flavored syrups. Enjoy the convenience without having to leave campus!

The Den

The entertainment hot spot of the Student Center features great late-night snacks along with video games and pool tables. The perfect spot to kick back and relax with friends.

**Students living on campus are required to select from one of our convenient residential dining plans.*



Your Entertainment.

There are plenty of entertaining activities that take place right on campus, including theatre productions, Ranger athletic events, concerts, speakers, scientific lectures, movies, DJs, comedians, and gallery openings—often for free or reduced prices, for students.



Get started now! Visit uwp.edu/residencelife

Be at Parkside.

Living on campus is a great value. It's easy to budget when you know exactly what your expenses will be. In campus housing there are no additional charges for Wi-Fi, cable TV, air conditioning and heat.



[@uwparkside](https://twitter.com/uwparkside)



[@universityofwisconsinparkside](https://www.facebook.com/universityofwisconsinparkside)



[UWParkside](https://www.instagram.com/UWParkside)

Major in you.

**HOUSING AND RESIDENCE LIFE
262-595-2320 | HOUSING@UWP.EDU
4135 UNIVERSITY DRIVE, KENOSHA, WI 53144**

UNIVERSITY OF
WISCONSIN **PARKSIDE**