

UNIVERSITY OF WISCONSIN-PARKSIDE THEATRE ARTS DEPARTMENT PRESENTS

THE
**CURIOUS
INCIDENT
OF THE DOG IN THE
NIGHT-TIME**



A PLAY BY SIMON STEPHENS
BASED ON THE NOVEL BY MARK HADDON

THEATRE

UNIVERSITY OF
WISCONSIN **PARKSIDE**



UWP.EDU/THERITA

UNIVERSITY OF WISCONSIN-PARKSIDE

THEATRE ARTS

Be part of our company.

ARTS VISIT DAY

Dec 6, 2019

Tour state-of-the-art performance venues, studios, and design labs, meet with faculty and current students, and learn about scholarship opportunities.

uwp.edu/visit

- ▶ Award-Winning Academic & Artistic Programming
- ▶ Ideal Location – Between Milwaukee & Chicago
- ▶ State-of-the-Art Facilities
- ▶ Company-Based Training
- ▶ Professional Connections
- ▶ Amazing Graduate Success

Be at Parkside.

**SCHEDULE A CAMPUS VISIT OR
PROGRAM ENTRY AUDITION**

Fabrice Conte-Williamson
contewil@uwp.edu

UNIVERSITY OF
WISCONSIN **PARKSIDE**

THE UW-PARKSIDE THEATRE ARTS DEPARTMENT PRESENTS

THE CURIOUS INCIDENT OF THE DOG IN THE NIGHT-TIME

A PLAY BY SIMON STEPHENS
BASED ON THE NOVEL BY MARK HADDON

LEAD PRODUCTION TEAM

DIRECTOR

Fabrice Conte-Williamson

SCENIC DESIGNER

Jody Sekas

ASSISTANT DIRECTOR

Bri Humke*

COSTUME DESIGNER

Sarah Hemken*

MAKEUP DESIGNER

Jenny Hinajosa*

LIGHTING DESIGNER

Jake Bray
Bryan Byars*

SOUND DESIGNER

Kevin Gray

TECHNICAL DIRECTOR

Jody Sekas

STAGE MANAGER

Samantha Feiler*

PROPERTIES MASTER

Minnie Martinez*

DRAMATURG

Tyler Coffey*

PROJECTIONS DESIGNER

Noah Frye*

(*) indicates student

PATRICIA PETRETTI, Producing Sponsor

The Curious Incident of the Dog in the Night-Time is presented by special arrangement with Dramatists Play Service, Inc., New York.

The Curious Incident of the Dog in the Night-Time was first presented by the National Theatre, London at the Cottesloe Theatre on August 2nd 2012 and transferred to the Gielgud Theatre, West End, London on March 12th 2013. The Play opened in the USA at the Ethel Barrymore Theatre on October 5th 2014.

Presented by kind permission of Warner Bros. Entertainment.

DIRECTOR'S NOTES



As I sit down to write this director's note, I suddenly realize that, as an audience member, I simply dread going to the theatre to see plays adapted from popular novels. As not to offend anyone, I will refrain from listing specific examples, but I have been perpetually disappointed by this type of theatrical experience. I find that the theatre thrives when it tells stories especially crafted for it rather than grossly distorting the content of a novel to suit the boundaries of the stage. Yet, here I am, welcoming you to this performance of *The Curious Incident of the Dog in the Night-Time*, a play adapted from Mark Haddon's celebrated novel.

Without a doubt, Simon Stephens' skillful adaptation is what allows *Curious Incident* to succeed as a theatrical event. Rather than constraining and hindering the original narrative, the transformation from novel to play seems to have liberated it. The story soars on stage because it invites all members of the creative team—director, designers, and performers—to engage in a rich and complex collaborative process that results in a unique and exhilarating experience for our audiences. In other words, whether you are a longtime fan of *Curious Incident* or whether you are about to meet Christopher for the first time, we hope that you delight in the world we have imagined for you.

As a theatre artist and as an educator, I am thrilled to see *The Curious Incident of the Dog in the Night-Time* performed on our stage. It is, after all, one of the most distinguished plays of the 21st century and I believe that, as an academic institution, we must regularly produce the work of contemporary playwrights to best serve our community. Additionally, the complexity of the material and the challenges unique to this piece of theatre make *Curious Incident* a fantastic opportunity for our students to learn new skills, engage with innovative technologies, and tell a story like no other.

On behalf of the students, faculty, and staff, thank you for supporting the theatre arts at UW-Parkside.

Enjoy the show!

DRAMATURG'S NOTES

Simon Stephens' play, *The Curious Incident of the Dog in the Night-Time*, was adapted from the critically-acclaimed eponymous novel by Mark Haddon. Despite receiving many requests to adapt the novel, Haddon initially declined on the assumption that such a project was impossible. In 2007, Haddon was overwhelmed by the volume of requests and began to think differently about the possibilities of a successful adaptation. He approached Stephens, whom he had befriended while working at the National Theatre in London, and asked the playwright to adapt his story for the stage.

In his adaptation, Stephens aimed for loyalty to the novel, although a few changes were necessary. While in the novel the story is told from Christopher's perspective, for example, the play offers multiple third-person points of view by introducing the voices of the individuals in Christopher's social environment. In addition, Stephens emphasizes the relationship between Christopher and his main teacher and mentor, Siobhan, as he believes that everyone would be able to relate to having a favorite teacher in school.

In preparation for the Broadway production of *The Curious Incident of the Dog in the Night-Time*, Stephens revised the script to identify and replace British terms that may be too unfamiliar to an American audience. The updated script is the one presented in this production.

After achieving success in London and on Broadway, *The Curious Incident of the Dog in the Night-Time* has become an international sensation, with notable productions in Mexico, South Korea, South Africa, and a world tour led by the National Theatre. This worldwide approval can be attributed to the universal themes at the heart of the story: family, adversity, and courage.



TYLER COFFEY

CAST

CHRISTOPHER	Tomer Proctor-Zenker
SIOBHAN	Erin Dillon
ED	Dylan Thomas
JUDY	Jennifer Nelson
VOICE ONE / MRS. SHEARS (AND OTHERS)	Jenna Eve Kleinofen
VOICE TWO / ROGER SHEARS (AND OTHERS)	Jon Rocha
VOICE THREE / POLICEMAN (AND OTHERS)	Kyle Aaron Racas
VOICE FOUR / REV. PETERS (AND OTHERS)	Ben Compton
VOICE FIVE / NO. 40 (AND OTHERS)	Jessica Baker
VOICE SIX / MRS. ALEXANDER (AND OTHERS)	Ariana Gibeault

THERE WILL BE ONE 15-MINUTE INTERMISSION



AUTISM
Awareness
Acceptance
Empathy

Since 2007, nonprofit organization **Good Friend, Inc.**, has promoted **Autism Understanding through Respectful Education.**

Staff and student services in K-8th grade schools, plus community-based presentations, have reached more than **50,000** people - including the cast and crew of *The Curious Incident of the Dog in the Night-Time*. Let us help your group better understand neurodiversity!

Visit **goodfriendinc.com**
for information.



CAST BIOS



JESSICA BAKER (*Voice Five, No. 40, others*) is in her third year as a theatre arts major and geoscience major. Her first lighting design, *The War of the Worlds*, made her the KCACTF 2019 Region 3 Theatrical Design Recipient. She has been an electrician several times at Parkside and the Fireside Dinner Theatre. She spent this past summer being an intern at The Great River Shakespeare Festival.



BEN COMPTON (*Voice Four, Rev. Peters, others*) is a theatre arts major. His previous theatre credits include *Titus* (Chiron) with Fleeing Artists Theatre, *Urinetown* (Mr. McQueen), *Midnight and Moll Flanders* (Draper), *The War of the Worlds* (Richard Pierson) at Parkside, and *A Midsummer Night's Dream* (Puck) for which he received an Irene Ryan Nomination at the College of Lake County.



ERIN DILLON (*Siobhan*) Erin is a sophomore theatre arts major and has picked up a dedication for lighting as well as for acting. Educational credits include *Midnight and Moll Flanders* (minor supporter), *Urinetown* (spotlight operator), *Love's Labour's Lost* (light board operator). Professional credits include stage managing at First Stage Children's Theatre in Milwaukee. She is excited to continue learning about her passion with the wonderful friends and faculty she has had the pleasure of getting to know in this department.



ARIANA GIBEAULT (*Voice Six, Mrs. Alexander, others*) is a junior theatre arts major. Her previous credits with Parkside include *Urinetown* (Hope Cladwell), *The War of the Worlds* (Voices), *One Man Two Guvnors* (Policeman, Boy Scout), makeup crew for *Angels in America*, and wardrobe crew for *Don Juan, Eurydice, Midnight and Moll Flanders*, and *Love's Labour's Lost*. Recently, she played Lucius in *Titus Andronicus* with Fleeing Artists Theatre.

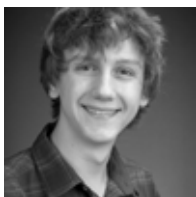


JENNA EVE KLEINOFEN (*Voice One, Mrs. Shears, others*) will be graduating this December with a major in theatre arts. She has been working on Parkside productions onstage and backstage for the past three years including: *Don Juan, One Man Two Guvnors, Midnight and Moll Flanders* and *Urinetown*. Last year she had the pleasure of working on the podcast *Hansel, Gretel & Minna* for GirlTales.

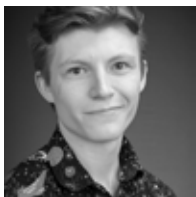


JENNIFER NELSON (*Judy*) is a senior studying theatre arts and psychology. Other credits include *Glass Slipper* (Nicole), *Annie Jump & the Library of Heaven* (Mrs. Gomez, Chairwoman u/s) at Renaissance Theaterworks, *Almost Maine* (Female Swing) at Fleeing Artists Theatre, *Midnight and Moll Flanders* (Young Moll) at Parkside, *The Tempest* (Trinculo), *The Miser* (Master Jacques), *Crimes of the Heart* (Meg), and *The Actor's Nightmare* (Ellen) at the College of Lake County in Illinois.

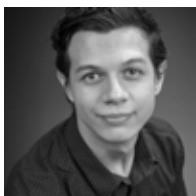
CAST BIOS



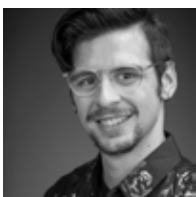
TOMER PROCTOR-ZENKER (*Christopher*) is thrilled to be cast in *The Curious Incident of the Dog in the Night-Time*. A sophomore with a concentration in acting, his previous theatre credits at Parkside include Captain and Announcer Three in *The War of The Worlds* and Tiny Tom in *Urinetown*. Other acting credits include, *Rodger & Hammerstein's Cinderella* (Lionel), *Seussical the Musical* (Gen. Genghis-Khan Schmitz) and *Murder by the Book* (Shakespeare) at Illinois Lutheran High School.



KYLE AARON RACAS (*Voice Three, Policeman, others*) is in his fourth year at Parkside working towards a theatre arts major with a focus in performance, as well as a graphic design minor. Kyle Aaron has been seen on our main stages in *Love's Labour's Lost* (Berowne), *Midnight and Moll Flanders* (Ensemble), *The War of the Worlds* (Stranger, Announcer), *Eurydice* (Orpheus), *Angels in America* (Joe U/S), *Don Juan* (Don Carlos), *A Funny Thing Happened on the Way to the Forum* (The Geminae), and *A Streetcar Named Desire* (A Young Collector, Ensemble, Steve U/S). He has most recently returned from the Edinburgh Fringe Festival where he was an acting intern (Ensemble) with MHK Production's production of *Boswell* by Milwaukee playwright Marie Kohler.



JON ROCHA (*Voice Two, Roger Shears, others*) is a transfer student from College of Lake County now in his junior year at Parkside studying theatre arts with a focus on dramaturgy and directing, and a transfer student from The College of Lake County. Recent performance credits include *The Addams Family Musical* (Lurch), and *Oedipus Rex* (Kreon). He was also a student director for *Play-On!*, a student showcase at CLC.



DYLAN THOMAS (*Ed*) is a junior theatre arts major with a focus in acting. His performance credits include *Cabaret* (The Emcee), *A Doll's House* (Torvald Helmer), and *Oedipus Rex* (Leader of the Chorus) all at the College of Lake County in Grayslake, Illinois.

**AWARD
WINNING**

Learn about student successes in the
Parkside Theatre Arts program.

uwp.edu/theatre

PRODUCTION TEAM BIOS



JAKE BRAY (*Lighting Designer*) has designed lighting regionally for theatre, dance, opera, and television. You may have seen his work previously at Parkside on shows including *Lighting Design for Melancholy Play*, *The Taming of the Shrew*, *A Midsummer Night's Dream*, *Macbeth*, and *Urinetown*, and sound design for *Eurydice*. Other credits include resident lighting designer at PCPA in Santa Maria, California, the world premiere opera *Sundance*, and the Chicago premieres of *Stadium Devildare* and *Adrift*. He teaches in the areas of lighting design, projection design, and serves as the theatre manager for Parkside.



BRYAN BYARS (*Lighting Designer*) is in his final year as a theatre arts major with a concentration in scenic/lighting design & technology. Additional professional training includes work at Colorado Shakespeare Festival, American Players Theatre, Skylight Music Theatre, Kenosha Youth Performing Arts Company, Rita Operations, and of course, the Fireside Dinner Theatre. Bryan is working towards a career in lighting design/production management and will earn his degree in May 2020.



TYLER COFFEY (*Dramaturg*) is a senior double-majoring in psychology and theatre arts. Previous credits include *Urinetown* (dramaturg), *Midnight and Moll Flanders* (assistant sound designer). Acting credits include *Love's Labour's Lost* (Moth) and the FreshINK Series staged reading of *Water by the Spoonful* (Ghost).

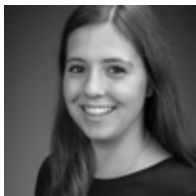


FABRICE CONTE-WILLIAMSON (*Director*) is a director, actor, and theatre educator, teaching courses in performance and theatre history. Fabrice received a Master of Performing Arts from the University of Nice (France), as well as an MFA in Directing and an Interdisciplinary Ph.D. from the University of Oklahoma Helmerich School of Drama. While teaching at OU, Fabrice served as Chair of the Aspire Initiative for the Kennedy Center American College Theatre Festival (KCACTF) Region VI. His primary research focuses on post-modern French dramatic literature and performance theory, the role of literary myth in dramatic literature, and the development of multilingual and cross-cultural theatre movements. Favorite directing credits include *The War of the Worlds* at UW-Parkside, *Angels in America* at The University of Oklahoma, and *Frankenstein* at Oklahoma City Theatre Company.



MADDISON CRECCHIO (*Assistant Stage Manager*) is in her first year at Parkside studying theatre arts with a focus in performance. Crew credits include wardrobe team for the musical *The Addams Family* at the College of Lake County.

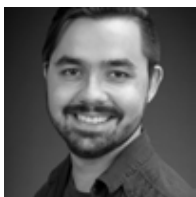
PRODUCTION TEAM BIOS



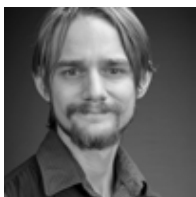
SAMANTHA FEILER (*Stage Manager*) is in her senior year and is pursuing a theatre arts major with a concentration in both acting and stage management. Past credits include stage manager for *Pinta El Feugo* in Milwaukee Chamber Theatre's Young Playwright Festival, for the Br!nk Br!efs 2018 Playwright Festival and the Br!nk Br!efs 2019 Playwright Festival with Renaissance Theaterworks, and for *Love's Labour's Lost* and *The War of the Worlds* at Parkside where she also was assistant stage manager for *One Man, Two Guvnors* and wardrobe crew for *Angels in America* at Parkside.



NOAH FRYE (*Projections Designer*) is in his senior year as a theatre arts major with a focus in lighting. Credits include *Angels in America* and *Urinetown* (master electrician), *One Man, Two Guvnors* (assistant lighting designer), *Eurydice* (assistant sound designer), and *Midnight and Moll Flanders* (lighting designer). Noah spent this past summer at the Stagecraft Institute of Las Vegas receiving advanced training in lighting and stagecraft. He also had worked at American Players Theatre as a Production Assistant for their 2018 season.



ALEXANDER GRAY (*Assistant Stage Manager*) is in his second year at Parkside majoring in psychology and theatre arts with concentrations in performance and stage management. Parkside credits include *Urinetown* (assistant stage manager) and *The War of the Worlds* (sound board operator). Previous College of Lake County credits include *The True Story of the Three Little Pigs* (stage manager), *A Relationship - Abridged* (director), and *Jekyll & Hyde* (assistant director).



KEVIN GRAY (*Sound Designer*) is in his first year working as sound manager and instructor for Parkside. He received his BA in Sound Design from Michigan Technological University. He has served as sound designer and engineer for University of Southern Indiana and New Harmony Theatre where he worked on shows such as: *Anonymous*, *Full Monty*, *Arcadia*, and more. He is excited to work with the students faculty and staff at Parkside.



SARAH HEMKEN (*Costume Designer*) is in her final year at Parkside and is a theater arts major with a concentration in design and technology. She has a passion for costuming and is currently costume designer for *The Curious Incident of a Dog in the Night-Time*. She has been assistant costume designer for *Urinetown*, wardrobe supervisor for *Love's Labours Lost*, and has also enjoyed being on wardrobe crew for several other shows at Parkside. She works in the costume shop and helps with builds and alterations for each show. Some of her other work includes stitching and being on wardrobe crew for Utah Festival Opera and Musical Theatre this past summer.



SUPPORT THEATRE ARTS EDUCATION

Play a part in changing the life of a student through contributions to the Theatre Arts program.

Cole Conrad | Lois J. Skatrud
Scholarship Recipient in "Midnight and
Moll Flanders" Fall 2018



LOIS J. SKATRUD THEATRE ARTS SCHOLARSHIP FUND

An Exciting Opportunity to Create More Scholarship Funds!

Longtime theatre creator and enthusiast, Lois J. Skatrud, created a scholarship to support students who dream of pursuing an education in the theatre arts.

The Lois J. Skatrud Theatre Arts Scholarship Fund is over halfway to realizing its goal of a \$100,000 endowment, which will cover 50% of the annual tuition costs for a Parkside theatre arts major.

You can help make Lois's dream a reality by contributing to the Lois J. Skatrud Theatre Arts Scholarship Fund. The first \$2,500 in gifts made by Dec 31, 2019 will be matched dollar for dollar.

Choose from three donor categories, each representing the roles and children's theatre produced by Lois and friends throughout her career.

Raggedy Ann | \$2,500

King Midas and the Touch of Gold | \$1,000

The Princess Who Had No Name | \$50

To invest in Parkside Theatre Arts students through the Lois J. Skatrud Scholarship, visit:
uwp.edu/skatrud-scholarship

For more information or questions about making a donation to support student success, contact:
Linnea Booher | booher@uwp.edu | 262-595-2404

ABOUT LOIS J. SKATRUD

Born in 1933 during the Great Depression, Lois was a ray of sunshine for her mother, Ruth Shultz. Lois was a natural entertainer who on her fifth birthday was featured in the local press as the family's own "Shirley Temple." She pursued her love of theatre after high school with the Maskers Club of Manitowoc and played a host of different roles. Lois married Glenn Skatrud, who served as a United Methodist Pastor for nearly 50 years, in 1957 and together they had six children—it was truly "A Wonderful Life." In 1987, she started a children's theatre troupe, the Milton Optimist Club's Kids on Stage, in Milton Wis., and devoted enormous time and energy to them. She co-directed for 27 years and worked with nearly 1,000 children. Lois is remembered by children as the energetic emcee who presented each show dressed as Raggedy Ann.





Chalena Williams | Lois J. Skatrud
Scholarship Recipient, with Cody
Summers in "Love's Labour's Lost"
Spring 2019

"I could have never imagined this if I tried. Helping students finish college to pursue a career in theatre is my dream... If I had a bucket list, this would be on it."

- Lois J. Skatrud on creating the scholarship

The University of Wisconsin-Parkside Theatre Arts Department focuses on student success by providing unparalleled opportunities for them to hone their craft. The Department deploys a company model that allows all students to practice the various theatre arts from acting and directing to set building, to lighting, to sound, and costume construction. Because our faculty continue to be professionally engaged, our students can take advantage of extraordinary internships with professional theatres.

The excellence of the Theatre Arts Department was recognized by the Wisconsin Board of Regents with the Award for Teaching Excellence 2009. Each year, Parkside students compete at the Kennedy Center American College Theatre Festival and take home many awards, including progression to the national final in Washington DC.

Students largely rely on financial aid to help make their dreams a reality. We hope that you will consider a donation to support student success and exceptional performances at Parkside.

donate.uwp.edu/give

To select a designation to UW-Parkside Theatre, select a designation of "Other" and fill in which fund you would like your investment to support.

Please make checks payable to the UW-Parkside Foundation and note the theatre fund or purpose in the check memo line. Checks can be mailed to:

UW-Parkside Foundation
900 Wood Road, Kenosha, WI 53144

For more information about supporting the arts at UW-Parkside, contact Linnea Booher:

booher@uwp.edu | 262-595-2404



Chelsea Strobe | Lois J. Skatrud
Scholarship Recipient in "A Funny Thing
Happened on the Way to the Forum"
Spring 2017

PRODUCTION TEAM BIOS



JENNIFER HINOJOSA (*Makeup Designer*) is a senior theatre arts major. Tech credits include *Midnight and Moll Flanders* (wardrobe crew), *Cabaret* (spotlight operator), and *Jekyll and Hyde* (deck/wardrobe crew). Jennifer has also been seen in the FreshINK Series staged reading of *Moments* for Parkside's 50 Years Celebration.



BRI HUMKE (*Assistant Director*) This is Bri's first time assistant directing a show and she is so excited to be on the team for this production. This past summer she spent the month of August at the Edinburgh Fringe Festival assistant stage managing a production of Marie Kohler's *Boswell*. She has stage managed productions of *Midnight and Moll Flanders*, *Urinetown*, and *Eurydice* at Parkside. She has also worked house management at Parkside, Door Shakespeare, and American Players Theatre.



MINNIE MARTINEZ (*Properties Master*) is in her junior year focusing on scenic design and props. Credits include *Addams Family* (Assistant Scenic Designer), *Play On!* (Scenic Designer), *Oedipus Rex* (Assistant Scenic Designer), *A Doll's House* (Prop Master), *Play On!* (Assistant Stage Manager), and *A Midsummer Night's Dream* (Assistant Stage Manager). She has received awards such as the DTM Legacy award and Don Childs Stagecraft Institute of Las Vegas award at KCACTF Region 3.



JODY SEKAS (*Scenic Designer, Technical Director*) is an associate professor of scenic design and technology and a core professor in the digital design and fabrication certificate at Parkside. He has taught scenography in the Theatre, Film, & Dance Department at Humboldt State University in northern California; scenic/lighting design and technology at UW-Eau Claire, and for four years was the resident scenic and lighting designer for the Sioux Falls Playhouse in South Dakota. He has worked as a freelance designer for such venues as the Oregon Shakespeare Festival, Door Shakespeare, First Stage Children's Theatre, Milwaukee Chamber Theatre, Dell'Arte International, Rochester Civic Theatre, Omaha Theatre Company for Young People, The Western Stage, and on several independent films.



SIMON STEPHENS (*Playwright*) has written many plays that have been translated into more than 30 languages and produced all over the world. He is a professor of playwriting at Manchester Metropolitan University, an associate playwright at the Royal Court Theatre, the artistic associate at the Lyric Hammersmith in London, and the Steep Associate Playwright at Steep Theatre in Chicago.

PRODUCTION PERSONNEL

ASSISTANT STAGE MANAGERS	Maddison Crecchio, Alexander Gray
ASSISTANT TECHNICAL DIRECTOR	Josh Christoffersen
STAGE MANAGEMENT FACULTY ADVISOR	Misti Bradford
ASSISTANT SOUND DESIGNER	Jack Purves
ASSISTANT LIGHTING DESIGNERS	Maria Cervantes, Erin Dillon
ASSISTANT PROJECTIONS DESIGNER	Chelsea Strebe
DIALECT COACH	Brian Gill
FIGHT CHOREOGRAPHER	Kyle Aaron Racas
MASTER CARPENTER	Jeff Brain
LIGHTING AND PROJECTIONS FACULTY ADVISOR	Jake Bray
MASTER ELECTRICIAN	Jenny Bauer
PROPERTIES/PAINTS FACULTY ADVISOR	Jody Sekas
COSTUME/HAIR/MAKEUP FACULTY ADVISOR	Misti Bradford
HOUSE MANAGER	Lyric Simonson
COSTUME SHOP SUPERVISOR	Darice DaMata-Geiger
SCENIC LAB SUPERVISORS	Josh Christoffersen, Nate Stamper
FIRESIDE TECHNICAL DIRECTOR	Nate Stamper
FIRESIDE SCENE SHOP FOREMAN/ATD	Steven Novak
LIGHT BOARD OPERATOR	Taylor Ramcke
SOUND BOARD OPERATOR	Gabbi Goins
PROJECTIONS OPERATOR	Samantha Jaworek
DECK CHIEF	Talia Last
DECK CREW	Austin Dvorak, Aidan Johnson, Talia Last, Megan Schaut
WARDROBE SUPERVISOR	Emmalee Berger
WARDROBE CREW	Sam Kim, Leticia L'Huillier, Chalena Williams
MAKEUP CREW	Olivia Sprinsteen
COSTUME SHOP ASSISTANTS	Emmalee Berger, Ariana Gibeault Sarah Hemken, Bri Humke, Alexa Joy
SCENE SHOP ASSISTANTS	Jeff Brain, Maria Cervantes Austin Dvorak, Minnie Martinez, Jack Purves



Be part of our company.

PRODUCTION PERSONNEL

- SCENIC CONSTRUCTION CREW Nick Alphin, Jessica Baker, Madalyn Ball
Reagan Becker, Ben Briselden, Marcus Case
Isabella Cernuska, Maddison Crecchio, Eric Danyus, Emma Foley
Jennifer Franco, Lynsey Gallagher, Nadia Goldstar, Bianca Gonzalez,
Starlyn Howard, Aidan Johnson, Rayanna Johnson, Bailey Johnston
Jenna Kleinofen, Abby Kubik, Talia Last, Shamoan Mian, Hans Pfrang
Josh Pride, Tomer Proctor-Zenker, Joe Romanak, Megan Schaut
Hailey Schowalter, Dylan Thomas
- PROPERTIES CREW Ben Compton, Tianna Field, Minnie Martinez
Sarah Severson, Olivia Springsteen
- LIGHTING CREW Nick Alphin, Madalyn Ball, Jenny Bauer, Reagan Becker
Bryan Byars, Marla Canda, Marcus Case, Isabellea Cernuska
Eric Danyus, Erin Dillon, Austin Dvorak, Timara Frink
Starlyn Howard, Aidan Johnson, Rayanna Johnson
Kammi Kringle, Taylor Ramcke, Jon Rocha, Hailey Schowalter
- PROJECTIONS CREW Noah Frye, Kyle Aaron Racas, Chelsea Strebe
- SOUND CREW Garrett Allen, Sawyer Edwards, Lyric Simonson, Jack Purves
- COSTUME CREW Emmalee Berger, Mya Figueroa, Arianna Gibeault
Gabbi Goins, Bri Humke, Sam Kim, Delaina Kuzelka, Joseph Leidlein
Chris LeValley, Noah Museitif, Ambrea Pinkowsk, Rachel Robinson
Rebecca St. Ange, Dawt Tial, Chalena Williams, Celeste Zuniga
- PUPPET CONSTRUCTION Nicole Wilson
- MARKETING / PROGRAM LAYOUT Oliver Johnson
- PROMOTIONS Jennifer Sassaman
- POSTER DESIGN Kim Sekas
- PRODUCTION PHOTOGRAPHER Alyssa Nepper
- DIRECTOR OF CRAFT SERVICES Keith Harris
- DEPARTMENT ASSISTANTS Jennie Filippone, Jared Holloway, Joe Lambin, Karen Sorensen

SPECIAL THANKS

Chelsea Budde, Kenosha Creative Space, Lakeside Players
Casa Capri for their ongoing support



PROGRAM ENTRANCE AUDITIONS
uwp.edu/theatreaudition

Support the Theatre Arts at Parkside.

In the same way that mounting a play requires a team, funding it is likewise a team effort. To produce our amazing shows, we rely on a combination of sources—tickets sales, the University, and private funding.

This year we kick off two new initiatives that will allow us to maintain our high standards through patron donations.

LOIS J. SKATRUD THEATRE ARTS SCHOLARSHIP FUND

We are making a concerted effort to complete the Lois J. Skatrud Theatre Arts Scholarship Fund. When we reach our goal of \$100K, the scholarship will cover 50% of a theatre student's tuition. See our insert for more details.

PRODUCING SPONSORS

We are inaugurating a new program for donors who underwrite a significant part of each of our productions, including our FreshINK series. It is our pleasure to recognize the important contribution that these theatre lovers have made. To our 2019-2020 producing sponsors, we say a heartfelt *thank you*.

The Curious Incident of the Dog in the Night-Time

Patricia Petretti

Silent Sky

Dr. Donald A. Cress

The Complete Works of William Shakespeare, abridged

Romeo and Juliet

Amy Bigna

FreshINK Series

Julie Anding & Lisa Kornetsky

For more information about becoming a producing sponsor for 2020-2021, contact Dean Lesley Walker: lwalker@uwp.edu

EVEN MORE WAYS TO GIVE

You can also play a part in changing the life of a student through contributions to the Theatre Arts program. You can choose to invest in Theatre Production Enhancement, which will go directly toward funding various aspects of our season, or Student Scholarships. Funds contributed to scholarships are awarded each year based on academic and artistic achievement.

For more information about supporting the arts at UW-Parkside, contact Linnea Booher: 262-595-2404 | booher@uwp.edu

Thank you for being part of our work!

The College of Arts and Humanities with the UW-Parkside Foundation gratefully acknowledges the following individuals for their investment in the Theatre Arts Department and students.

Producing Sponsors

Julie Anding & Lisa Kornetsky*

Amy Bigna*

Dr. Donald A. Cress*

Patricia Petretti*

\$10,000+

Heidi Skatrud & Timothy W. Harty*

\$1,000+

Lisa & Mike Humke*

\$500-\$999

Susan M. Cable, D.D.S., '81

\$250-\$499

James G. Didier

Laurie & Steve Feiler

David R. Koss '06

Doris L. Nice

Jennifer Rupp

Jody & Kim Sekas

Donations listed were received between July 1, 2018-October 1, 2019.

For omissions or changes to this donor list, please contact:

Linnea Booher | 262-595-2404 | booher@uwp.edu

*Denotes members of the UW-Parkside Chancellor's Society.

For more information, visit: uwp.edu/chancellors-society

A STANDING OVATION for our partner, The Fireside Dinner Theater in Fort Atkinson, WI. The University of Wisconsin-Parkside celebrates a long-standing partnership with The Fireside and is grateful for its continued partnership with our program that creates hands-on, professional learning experience for our students.

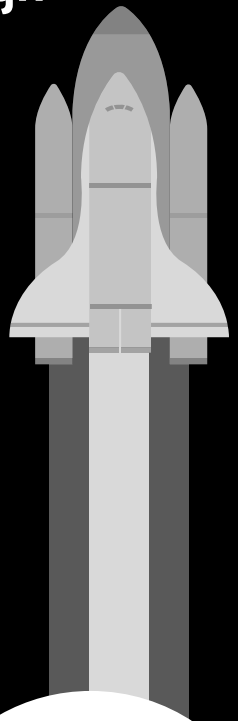
Boost your creativity.

Music | Poetry | Art | Design

624 57th Street

Downtown Kenosha

kenoshacreativespace.com



KENOSHA
CREATIVE
SPACE



Oct 18 - Nov 3, 2019



Dec 13 - 22, 2019



Jan 10 - 26, 2020



Feb 21 - Mar 8, 2020



Mar 27 - Apr 5, 2020



May 8 - 24, 2020

2519 Northwestern Ave.
Racine, WI 53404

RacineTheatre.org
262.633.4218

DON'T FORGET TO CHECK OUT OUR OTHER SERIES

Racine Children's Theatre | Comedy Tonight
Jean's Jazz | Signature Spotlight Concert Series





The Kennedy Center

The Kennedy Center American College Theater Festival, part of the Rubenstein Arts Access Program, is generously funded by David M. Rubenstein.

Special thanks to The Harold and Mimi Steinberg Charitable Trust for supporting the John F. Kennedy Center for the Performing Arts' Kennedy Center American College Theater Festival.

Additional support is provided by The Honorable Stuart Bernstein and Wilma E. Bernstein; and the Dr. Gerald and Paula McNichols Foundation.

Kennedy Center education and related artistic programming is made possible through the generosity of the National Committee for the Performing Arts.

This production is entered in the Kennedy Center American College Theater Festival (KCACTF). The aims of this national theater education program are to identify and promote quality in college-level theater production. To this end, each production entered is eligible for a response by a regional KCACTF representative, and selected students and faculty are invited to participate in KCACTF programs involving scholarships, internships, grants and awards for actors, directors, dramaturgs, playwrights, designers, stage managers and critics at both the regional and national levels.

Productions entered on the Participating level are eligible for invitation to the KCACTF regional festival and may also be considered for national awards recognizing outstanding achievement in production, design, direction and performance.

Last year more than 1,500 productions were entered in the KCACTF involving more than 200,000 students nationwide. By entering this production, our theater department is sharing in the KCACTF goals to recognize, reward, and celebrate the exemplary work produced in college and university theaters across the nation.

ROMEO AND JULIET

Apr 3-26, 2020

Main Stage Theatre

Apr 3, 11, 18, 24 at 7 pm

Apr 3 & 24 at 10 am

Apr 26 at 2 pm

Apr 4-25, 2020

Main Stage Theatre

Apr 4, 10, 17, 25 at 7 pm

Apr 5 & 19 at 2 pm

Apr 23 at 10 am

THE COMPLETE WORKS OF WILLIAM SHAKESPEARE (ABRIDGED)

THEATRE

UNIVERSITY OF
WISCONSIN **PARKSIDE**



UWP.EDU/THERITA



SILENT SKY

By Lauren Gunderson

The true story of 19th century astronomer Henrietta Leavitt plays out against a landscape of fierce sisterly love, early feminism, and universe-revealing science. Exploring a woman's place in society during a time of immense scientific discoveries when women's ideas were dismissed until men claimed credit for them, the play shows Henrietta coping with work-life tension, tradeoffs, and the expectations society and family have of women—and how greatly they can pull one away from what they are passionate about.

NOV 22-DEC 8, 2019

Black Box Theatre

Nov 22, 23 Dec 6, 7 | 7 PM

Nov 24 Dec 8 | 2 PM

Dec 6 | 10 AM

CALL 262-595-2564

OR ORDER ONLINE AT

UWPARKSIDETICKETS.COM

THEATRE

@TheRita

UNIVERSITY OF
WISCONSIN

PARKSIDE

UWP.EDU/THERITA

COMING SOON