

THE UW-PARKSIDE THEATRE ARTS DEPARTMENT PRESENTS

THE WAR OF THE WORLDS

THE RADIO PLAY

WRITTEN BY HOWARD E. KOCH
BASED ON THE NOVEL BY H.G. WELLS



LEAD PRODUCTION TEAM

DIRECTOR

Fabrice Conte-Williamson

SCENIC DESIGNERS

Taylor Varney
Keith Harris

ASSISTANT DIRECTOR

Olivia Jardas*

COSTUME DESIGNER

Misti Bradford

TECHNICAL DIRECTOR

Nate Stamper

LIGHTING DESIGNER

Jessica Baker*

SOUND DESIGNER

Karla Chavez*

MAKEUP & HAIR DESIGNER

Heather Rock*

PROPERTIES MASTER

Nick Oleksak*

PROJECTIONS DESIGNER

Alex Hamilton*

STAGE MANAGER

Samantha Feiler*

(*) indicates student

THE WAR OF THE WORLDS is produced by special arrangement with Playscripts, Inc.



FABRICE
CONTE-WILLIAMSON

DIRECTOR'S NOTES

This year marks the 80th anniversary of the legendary broadcast of *The War of the Worlds*, a radio drama based on H.G. Wells' science fiction novel. This broadcast was part of *The Mercury Theatre on the Air*, a weekly series that began to air on CBS Radio in the summer of 1938. The program was written, directed, and produced by Kenosha native Orson Welles and other prominent members of the Mercury Theatre, such as John Houseman and Paul Stewart. Welles, who had found tremendous success on Broadway as Julius Caesar the previous season, played the lead role in every episode.

Despite the talent of its cast and the quality of its scripts, early episodes of *The Mercury Theatre on the Air* failed to attract large audiences. However, the broadcast of *The War on the Worlds* on October 30, 1938—the fourteenth episode of the series—changed everything. The novel had been adapted as a radio script by Howard Koch, who transposed the action from rural England at the end of the 19th century to the contemporary United States. In order to heighten a sense of realism, Koch embraced the format of a live newscast describing unfolding events. This dramatic choice would prove to be a powerful one. Indeed, in the context of rising international tensions at the dawn of World War II, the public was used to the frequent interruption of radio programming by the broadcast of news bulletins. As a result, many listeners who missed the beginning of the episode believed that they were in fact listening to the description of real events and that the Earth was, indeed, under attack from a Martian army.

The next day, the front page of leading newspapers reflected the outrage of the public, who had been duped by the documentary-style radio play. *The Boston Daily Globe* declared "Fake Radio 'War' Stirs Terror Through U.S." *The New York Times* printed "Radio Listeners in Panic, Taking War Drama as Fact." *The Herald Examiner* proclaimed "Radio Fake Scares Nation." Such sensational headlines helped propel Welles' notoriety and the program's popularity among listeners.

Following the success of *The War of the Worlds*, Campbell's Soup became the official sponsor of the series and *The Mercury Theatre on the Air* was renamed *The Campbell Playhouse*. The show ran for two additional seasons, although Welles left at the end of 1940 to pursue other projects—most notably the making of his iconic movie, *Citizen Kane*.

Today, UW-Parkside's production of *The War of the Worlds* invites audiences to travel back to the golden age of radio plays and enjoy the infamous story that convinced so many Americans that creatures from Mars had taken over the world!

CAST

RICHARD PIERSON Ben Compton
 STRANGER / OPERATOR THREE / ANNOUNCER / PIANO PLAYER Kyle Aaron Racas
 REPORTER CARL PHILIPS / OPERATOR FOUR Cole Conrad
 OPENING ANNOUNCER / COMMANDER / OPERATOR FIVE Matthew Rangel
 ANNOUNCER TWO / WILMUTH Jeff Brain
 ROOFTOP ANNOUNCER / MCDONALD / PIANO PLAYER / SINGERWilliam Leischer
 ANNOUNCER THREE / CAPTAIN Tomer Proctor-Zenker
 OBSERVER / SECRETARY OF THE INTERIOR Emmalee Berger
 POLICEMAN / OFFICER Dominick Knox
 GENERAL MONTGOMERY SMITH / OPERATOR ONE / TECHNICIAN Garrett Allen
 ANNOUNCER ONE / OPERATOR TWO / SINGER Ariana Gibeault
 FOLEY ARTIST / SINGER Emma Foley
 FOLEY ARTIST / SINGER Maggie McDonald
 FOLEY ARTISTJoe Romanak

THIS PRODUCTION IS PERFORMED WITHOUT AN INTERMISSION

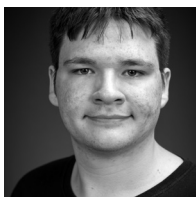


AWARD WINNING

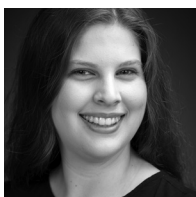
The Parkside Theatre Arts program is the only arts program in the UW-System to win the coveted “Regents Award” for outstanding quality of education.

UNIVERSITY OF WISCONSIN **PARKSIDE**

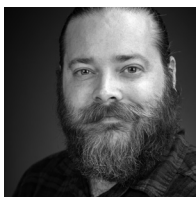
CAST BIOS



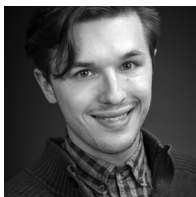
GARRETT ALLEN (*Operator One, Technician*) is in his first year at Parkside and is excited to be a part of his first show in college. He is a theater arts major with a focus on acting, and his favorite production to this point was as the lead role in *The Game's Afoot* at his high school.



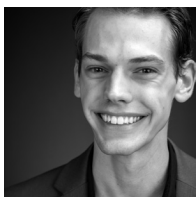
EMMALEE BERGER (*Observer, Secretary of the Interior*) is a first year transfer student at Parkside. She began her college career at the College of Lake County and is now a junior. She is a Theatre Design and Technology major with a concentration in costume design and minoring in Women's, Gender, and Sexuality studies. On stage she could most recently have been seen as Helena in *A Midsummer Night's Dream* or as Emma Jones in *Street Scene*, both at CLC. She also assistant costume designed both shows.



JEFF BRAIN (*Announcer Two, Wilmuth*) is a theatre arts performance major transfer from the College of Lake County in his junior year. His credits at CLC include *A Midsummer Night's Dream* (Nick Bottom), *The Tempest* (Sebastian), *Street Scene* (Carl Olsen), and *The Cherry Orchard* (Pishchik), for which he received an Irene Ryan nomination. He has also worked with Kenosha's Fleeing Artists Theatre in *Twelfth Night* (Toby Belch) and Lakeside Players in *A Midsummer Night's Dream* (Nick Bottom).



BEN COMPTON (*Richard Pierson*) is a theatre arts transfer student from the College of Lake County and is so excited to be making his debut within the Parkside Theatre Company! His previous theatre credits include *Cabaret* (Bobby), *A Midsummer Night's Dream* (Puck) for which he received an Irene Ryan Nomination, *Self Torture and Strenuous Exercise* (Alvin), *Street Scene* (Mr. Buchanan), and *Cherry Orchard* (Yepikhodov) all at the College of Lake County.



COLE CONRAD (*Reporter Carl Philips, Operator Four*) is a senior this year at UW-Parkside. His previous Parkside credits include *One Man Two Guvnors* (Alfie), *Angels in America* (Prior), *The Flick* (Sam), *A Streetcar Named Desire* (The Doctor, Ensemble), *A Christmas Carol: On The Air* (Ebenezer Scrooge), *Macbeth* (Ross), *Bob's Date* (Logic), *The Government Inspector* (Doctor), *The Last Days of Judas Iscariot* (Matthias of Galilee, St. Thomas), and *A Midsummer Night's Dream* (Snug). He worked as a Production Assistant and understudy at American Players Theatre.

Be part of our company.

CAST BIOS



EMMA FOLEY (*Foley Artist, Singer*) is in her first year at Parkside majoring in theatre arts with a concentration in acting and directing. She has directed three shows at various theatres, including Ashwaubenon High School and Evergreen Theatre. Some of her acting credits include *School of Rock* (Patty Di Marco), and *Mary Poppins* (Jane Banks) at Ashwaubenon High School. As well as *The Hound of the Baskervilles* (Jennie Watson), and *Alice @ Wonderland* (Cheshire Cat) through Evergreen Theatre.



ARIANA GIBEAULT (*Operator Two, Singer*) is a sophomore theatre major at UW-Parkside, and is very excited to be a part of *War of the Worlds!* Her previous credits with Parkside include: *Policeman* in *One Man, Two Guvnors*, wardrobe crew for *Don Juan* and *Eurydice*, and makeup crew for *Angels in America*.



DOMINICK KNOX (*Policeman, Officer*) is in his fifth and final year as a Parkside student, planning to graduate with a major in theatre arts and a minor in graphic design. This is his first role in a Parkside Theater production, but he previously had non-speaking roles in *Don Juan* (Costumed Crew) and *One Man, Two Guvnors* (Cameraman #2), and was a follow spot-operator for *A Funny Thing Happened on the Way to the Forum*. Over the summer, he played Sir Andrew Aguecheek in Fleeing Artist's production of *Twelfth Night*.



WIL LEISCHER (*Rooftop Announcer, McDonald, Piano Player, Singer*) is a freshman at UW-Parkside and is eager to make his mark in the company. As a theater major, Wil has a focus in acting but is willing to explore new horizons. His previous credits include *Beauty and the Beast* (The Beast), *The Wiz* (Tinman), and *Oliver!* (Mr. Sowerberry) at Merrill High School. He has also worked with the Central Wisconsin Educational Theater Alliance (CWETA) on *Shrek The Musical* (Bishop, Pig #1, and King Herold). Wil is absolutely thrilled to be a part of the UW-Parkside theater company.



MAGGIE MCDONALD (*Foley Artist, Singer*) is in her first year at Parkside. Maggie is from the Kenosha area and comes from Wilmot Union High School. Her high school theater credits include *Hello My Baby* (ensemble), *We Will Rock You* (ensemble), and *Legally Blonde* (ensemble). She is very excited to be at Parkside.

PROGRAM ENTRANCE AUDITIONS

uwp.edu/theatreaudition

CAST BIOS



TOMER PROCTOR-ZENK (*Announcer Three, Captain*) is excited to be making his Parkside debut at The Rita. A freshman at Parkside, his favorite high school credits include Rodgers & Hammerstein's *Cinderella* (Lionel), *Seussical the Musical* (Gen. Genghis-Khan Schmitz), and *Murder by the Book* (Shakespeare). Tomer loves performing, and *War of the Worlds* allows him to do so while also exploring and improving his voice acting skills.



KYLE AARON RACAS (*Stranger, Operator Three, Announcer, Piano Player*) is in his third year working towards a theater arts major at Parkside, with a focus in performance. Kyle Aaron has been seen on our main stages in *Eurydice* (Orpheus), *Angels in America* (Joe U/S), *Don Juan* (Don Carlos), *A Funny Thing Happened on the Way to the Forum* (The Geminae), and *A Streetcar Named Desire* (A Young Collector, Ensemble, Steve U/S).



MATTHEW RANGEL (*Opening Announcer, Commander, Operator Five*) is a senior at Parkside studying theatre arts and has been acting for nearly fifteen years. Previous credits at Parkside include *The Last Days of Judas Iscariot* (Judas), *Hedda Gabler* (Eilert Lovborg), and *One Man, Two Guvnors* (Alan Dangle). He has also been seen in Lakeside Players' productions of *Othello* (Iago) and *Dog Sees God* (CB), Racine Theatre Guild's production of *Vanya and Sonia and Masha and Spike* (Spike), Over Our Head Players' *The North Plan* (Agent Lee), *The Beauty Queen of Leenane* (Ray Dooley), *Captain Fantastic* (Captain Fantastic), and *The Outsiders* (Ponyboy). Matthew is also a scene shop assistant at Parkside.



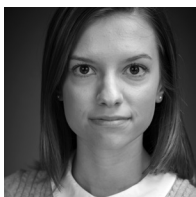
JOE ROMANACK (*Foley Artist*) is happy to be returning to Parkside theater after a decent hiatus. Having never done Foley artistry, he's excited to be broadening his horizons and making a bunch of noise. Previous productions include *Othello* (Roderigo), *Sin, Sex, and the CIA* (Daniel), and Voice's Found Repertory's *Oedipus Rex* (Creon).

100%

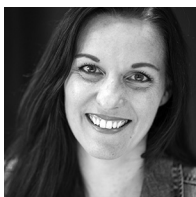
Spring 2018 Theatre Arts
Graduates Employed or
in Graduate School

Learn more about the career-launching Parkside theatre arts program.
uwp.edu/programs

PRODUCTION TEAM BIOS



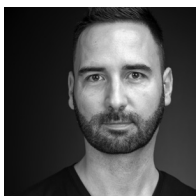
JESSICA BAKER (*Lighting Designer*) is in her third year at Parkside as a theatre arts major, and *War of the Worlds* is her first lighting design. She has been an electrician several times at Parkside and the Fireside Dinner Theatre. Last semester she was the master electrician for *One Man, Two Governors*. She has done other various production assignments; as in light board operator/programmer, sound board operator/programmer, projection design, assistant lighting design, and wardrobe crew. Last summer Jessica had an internship with Kenosha Youth Performing Arts Company.



MISTI BRADFORD (*Costume Designer*) is an associate professor of costume design, member of USAA Local 829, and theatre arts department chair, teaching courses in costume design, makeup, wig/hair design, crafts and properties, and principles of theatrical design, along with mentoring stage management students. Misti also serves as co-chair of design, technology, and management and the play selection committee for the Kennedy Center American College Theatre Festival, Region 3. Her most recent professional design and crafts artisan credits include American Players Theatre, Milwaukee Repertory Theatre, Door Shakespeare, Children's Theatre of Madison, First Stage Children's Theatre, Milwaukee Chamber Theatre in Wisconsin; Utah Festival Opera and Musical Theatre in Logan, Utah; PCPA Theaterfest in Santa Maria, CA; and Michigan Shakespeare Festival. Selected designs at Parkside include costumes for *Macbeth*, *Government Inspector*, *Hamlet*, *Twelfth Night* (KCACTF certificate of Merit), and *Three Penny Opera*.



KARLA CHAVEZ (*Sound Designer*) is in her fifth year at Parkside with a double major in Spanish and theatre arts with concentrations in sound and performance. Sound design credits include *Don Juan* and *How I Learned to Drive* at Parkside as well as *Othello* and *Dead Man's Cellphone* at the Rhode Center. Acting credits include *Kid's Kingdom* (Sylvia the Silly Step Sister of Cinderella) at the Bristol Renaissance Faire and *Taming of The Shrew* (Biondello) at Parkside.

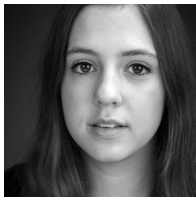


FABRICE CONTE-WILLIAMSON (*Director*) is a director, actor, and theatre educator, teaching courses in performance and theatre history at Parkside. Fabrice received a Master of Performing Arts from the University of Nice (France), as well as an MFA in Directing and an Interdisciplinary Ph.D. from the University of Oklahoma Helmerich School of Drama. While teaching at OU, Fabrice served as Chair of the Aspire Initiative for the Kennedy Center American College Theatre Festival (KCACTF) Region VI. His primary research focuses on post-modern French dramatic literature and performance theory, the role of literary myth in dramatic literature, and the development of multilingual and cross-cultural theatre movements.

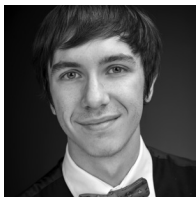
PRODUCTION TEAM BIOS



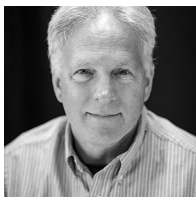
DARICE DAMATA-GEIGER (*Costume Lab Supervisor*) is the Costume Lab Supervisor and a lecturer teaching costumecraft at Parkside. She brings to UW-Parkside over 45 years of professional and educational experience as a costume designer, lab supervisor, and instructor. Darice earned her MFA in Theatre Design at Wayne State University in Detroit, MI, as a Hilberry Fellow. Darice has extensive professional costume design experience and has designed for multiple Chicago theatres including City Lit, Famous Door Theatre, and The Next Theatre. The last two summer seasons she designed costumes for the Michigan Shakespeare Festival.



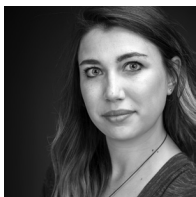
SAMANTHA FEILER (*Stage Manager*) is in her junior year but is only in her second year as a theatre arts major with a concentration in both acting and stage management. Past crew credits include stage manager for the Br!nk Br!ef Playwright Festival with Renaissance Theaterworks, assistant stage manager for *One Man, Two Guvnors* and wardrobe for *Angels in America* at Parkside. She is looking forward to Stage Managing with Milwaukee Chamber Theatre over winter break for their Young Playwright's Festival.



ALEX HAMILTON (*Projections Designer*) is a fourth year transfer student with a theatre arts major and an emphasis in design and management. He is the projections designer for *War of the Worlds* and the assistant scenic designer for *Midnight and Moll Flanders*. He is training to become a scenic designer and technical director. This past summer Alex worked as a carpenter for Hope Summer Repertory Theatre in Holland Michigan.



KEITH HARRIS (*Scenic Designer*) has worked in education for thirty years. As the theatre manager, he has staged a minimum of 1,000 events, ranging from university and community events to national tours. His artistry and expertise have been seen on the Parkside stage in over 50 set designs. Keith's talent as a designer has been recognized with five Regional and one National Design Merit Awards, presented through the Kennedy Center's American College Theatre Festival. His regional design work includes the 2012 set for *Bus Stop* at the Milwaukee Chamber Theatre.



OLIVIA JARDAS (*Assistant Director*) is in her final semester at Parkside. She spent the summer at First Stage Children's Theater in Milwaukee teaching Shakespeare and Scene Study as a Teacher's Apprentice. Olivia is double major in theater arts and biological science and can be seen working at the campus concierge or frequenting birthday parties as a princess for Fairytale Birthday Company LLC. She will be attending Cardinal Stritch in the spring to begin her Masters in Teaching.

PRODUCTION TEAM BIOS



NICHOLAS OLEKSAK (*Properties Master*) is majoring in theatre arts and is in his senior year. In addition to his major, he will receive a certificate in film studies. He has been a part of the production team for various shows at UW-Parkside since his freshman year and was a producer/co-host and board operator for the Parkside sports radio show Run DMZ on 101.5 WIPZ. Nicholas has also been in productions for KYPAC, Indian Trail High School and was in the Rhode Center production of *Othello* as Cassio.



HEATHER ROCK (*Make Up Designer*) is in her final semester at Parkside, graduating in December with her Bachelor's in theatre arts with an acting concentration. Heather's acting credits here include the FreshINK production of *Bengal Tiger at the Baghdad Zoo* (Narrator) and the mainstage productions of *A Funny Thing Happened...* (Miles Glorious & Erronius U/S) and *Don Juan* (La Violette). Heather's other credits include *A Midsummer Night's Dream* (Peter Quince), *Alice in Wonderland* (Ensemble), *Aladdin Jr.* (Usane/Townsperson/Maiden) and Fleeing Artists' *Twelfth Night* (Captain/Fabian).



JODY SEKAS (*Technical Director*) is an Associate Professor of Scenic Design & Technology in the Theatre Arts Department, and a core professor in the Digital Design & Fabrication Certificate Program. Prior, he taught Scenography in the Theatre, Film, & Dance Department at Humboldt State University in northern California; Scenic/Lighting Design & Technology at UW-Eau Claire, and was the resident scenic & lighting designer for the Sioux Falls Playhouse in South Dakota. He has also worked as a freelance designer and technician for such venues as The Oregon Shakespeare Festival, the Milwaukee Chamber Theatre, Dell'Arte International, Door Shakespeare, Omaha Theatre Company for Young People, The Western Stage, Utah Shakespeare Festival, and on several independent films.



NATE STAMPER (*Scenic Lab Supervisor*) has a B.A. in Theatre Arts from UW-Parkside, a M.A. in Teaching from Cardinal Stritch University, and holds a K-12 Wisconsin Teaching License in Theatre Arts. He has worked for the Kenosha Unified School District, as well as for professional theatres such as The Skylight Music Theatre, Next Act Theatre, the Fireside Dinner Theatre, and the Alabama Shakespeare Festival. Currently, he manages the build of all seven Fireside Dinner Theatre production's sets and props in Parkside's Scenic Lab as the Fireside's Technical Director.

PRODUCTION TEAM BIOS



LAUREN STONER (*Assistant Costume Designer*) is in her final year of undergraduate studies. She started at Parkside in 2012, left for a few years to attend school in New Mexico, and returned this past academic year to continue the pursuit of her passion for theatre. Lauren loves any and all aspects of theatre, both technical and performance – but her current focus is in costume design and construction.



KELSEY THOMAS (*Assistant Stage Manager*) is a junior theatre arts major. She has interest in the fields of stage management and sound design. Her first production involvement was as the female understudy in *A Christmas Carol*. From there, she has stage managed the FreshINK production of *Art*, and assistant stage managed the Main Stage show, *One Man, Two Guvvornors*. This past summer she stage managed *Twelfth Night* or *What you Will* at Fleeing Artist's Theatre. She hopes to continue expanding her knowledge in these areas.

**CREATIVITY, LIKE ALL LIVING THINGS, NEEDS
AN ENVIRONMENT TO EXPAND AND EVOLVE.**



THE KENOSHA CREATIVE SPACE

IS THAT ENVIRONMENT.

Kenosha Creative Space, Inc.
624-57th Street
Downtown Kenosha
KenoshaCreativeSpace.com


**KENOSHA
CREATIVE
SPACE**

PRODUCTION PERSONNEL

ASSISTANT STAGE MANAGER	Kelsey Thomas
STAGE MANAGEMENT FACULTY ADVISOR	Misti Bradford
LIGHTING FACULTY ADVISOR	Jake Bray
MASTER ELECTRICIAN	Bryan Byars
SOUND FACULTY ADVISOR	Jake Bray
PROPERTIES FACULTY ADVISOR	Jody Sekas
HAIR AND MAKE UP FACULTY ADVISOR	Misti Bradford
HOUSE MANAGER	Moisés Diaz
ASSISTANT COSTUME DESIGNER	Lauren Stoner
COSTUME SHOP SUPERVISOR	Darice Damata-Geiger
SCENIC LAB SUPERVISOR	Nate Stamper
SCENIC SHOP FOREMAN	Steven Novak
LIGHT BOARD OPERATOR	Maria Cervantes
SOUND BOARD OPERATOR	Alex Gray
PROJECTIONS OPERATOR	Shamoon Mian
WARDROBE SUPERVISOR	Bri Humke
WARDROBE CREW	Jenny Bauer, Sarah Hemken, Maranda Riley
MAKEUP CREW	Erin Dillon, Hailey Schowalter
COSTUME SHOP ASSISTANTS.....	Moises Diaz, Cole Garland, Arianna Gibeault Sarah Hemken, Bri Humke, Lauren Stoner, Alexa Uslemann
SCENE SHOP ASSISTANTS.....	Sam Fitzwater-Butchart, Noah Frye, Dionisse Molina Chelsea Strebe, Taylor Ramcke, Matthew Rangel
SCENIC CONSTRUCTION CREW	Jessica Baker, Jeff Brain, Bryan Byars, Marcus Case Tianna Field, Brian Gill, Dominick Knox, Talia Last Bezza LeGreve, Steven Novak, Olivia Springsteen
LIGHTING CREW	Austin Caracciolo, Tyler Coffey, Emma Foley Sarah Hemken, Olivia Jardas, William Leischer, Maggie McDonald Shamoon Mian, Tomer Proctor-Zenker, Jack Purves, Maranda Riley Olivia Springsteen, Chalena Williams
COSTUME CONSTRUCTION CREW	Emmalee Berger, Moisés Diaz, Cole Garland Arianna Gibeault, Sarah Hemken, Bri Humke Lauren Stoner, Alexa Uslemann
MARKETING	Oliver Johnson
PROMOTIONS	Jennifer Sassaman
PROGRAM LAYOUT	Oliver Johnson
POSTER DESIGN	Kim Sekas
PRODUCTION PHOTOGRAPHER	Alyssa Nepper
DIRECTOR OF CRAFT SERVICES	Keith Harris
DEPARTMENT ADMINISTRATIVE ASSISTANTS	Jennie Filippone, Jared Holloway, Joe Lambin, Karen Sorensen, Diane Tenuta

SPECIAL THANKS

Casa Capri for their ongoing support
Keith Harris, Marquette University Costume Department

BE A S.T.A.G.E. CLUB MEMBER!

Did you know that nearly 100% of our production costs are covered solely by ticket sales and donations?

University and College support provides funding for a portion of production costs, but primarily, we rely on the support of our patrons to cover the expenses for sets, costumes, music, lights, and royalties. We are hoping that you help to support our work and consider a donation to the UW-Parkside Theatre and become a member of our S.T.A.G.E. Club (Society of Theatrical Angels, Gallivants, and Enthusiasts).

To become a member of the S.T.A.G.E. Club, simply make a tax-deductible gift to the UW-Parkside Theatre Arts Department (c/o UW-Parkside Foundation) at one of the following levels:

- Golden Archangel (\$3,000 and above)
- Archangel (\$1,000-\$2,999)
- Golden Angel (\$500-\$999)
- Silver Angel (\$200-\$499)
- Gallivant (\$100-\$199)
- Enthusiast (\$35-\$99)

There are two funds to which you can direct your tax-deductible donation:

Theatre Production Enrichment Fund: Funds contributed here are used to help cover production costs and further enhance and produce high-quality productions at UW-Parkside. Your contribution will go directly toward funding various aspects of our season.

Theatre Arts Talent Scholarship Fund: Funds contributed here are awarded to our most deserving new and continuing theatre students each year based on academic and artistic achievement. This important scholarship fund helps us to reward our best talent and to attract and support exceptional theatre students.

Please consider contributing.

Contact Jody Sekas for more information. sekas@uwp.edu | 262-595-2967

S.T.A.G.E CLUB BENEVOLENT FUND

The UW-Parkside Theatre Arts Department wishes to thank the following individuals and businesses for their generous support.

Golden Archangel (\$3,000+)

The Fireside Theatre (Fort Atkinson)
Julie Anding & Lisa Kornetsky
Patricia Petretti

Archangels (\$1000-\$2,999)

Donald Cress Maureen & Chris Potter
Harley Davidson Matching Gifts Runzheimer International
Virginia & Tom Hartley Shirley Warter
Mike & Lisa Humke Pat Wegner

Golden Angels (\$500-\$999)

Tom & Kim Cooper
Ken and Peg Lukow

Silver Angels (\$200-\$499)

Florence Bohn
Laurie & Steve Feiler
David & Barbara Schneider
Jody & Kim Sekas

Theatre Gallivant (\$100-\$199)

Jacki Anderson Julie Rae Friedman
Dave Buchanan Mark & Courtney Marlair
James Didier Sandy Moats
Ruth Frear

Theatre Enthusiast (\$35-\$99)

Frances Bedford Wren Ide
Bill & Amy Chapin Frances Kavenik
Nola & James Gordon Doris Nice

Thank you for being part of our work!



OCT 19- NOV 4, 2018



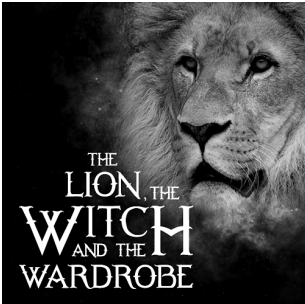
DEC 7 - DEC 16, 2018



JAN 11 - JAN 27, 2019



FEB 22 - MAR 10, 2019



APR 5 - APR 14, 2019



MAY 10 - MAY 26, 2019

262.633.4218
RacineTheatre.org

2519 Northwestern Ave.
Racine, WI 53404

DON'T MISS THE REST OF OUR GREAT SERIES



COMEDY
TONIGHT

Signature
SPOTLIGHT
Concert Series

JEAN'S
JAZZ

PARKSIDE Range

CONTEMPORARY A CAPPELLA

NOV 9

Main Stage Theatre | 7 pm

TICKETS

\$5 Students, Parkside Faculty/Staff, Seniors
\$10 General Public

MUSIC
The Rita

UNIVERSITY OF
WISCONSIN **PARKSIDE**

uwp.edu/therita



The Kennedy Center

THE JOHN F. KENNEDY CENTER FOR THE PERFORMING ARTS

The Kennedy Center American College Theater Festival 49®, part of the Rubenstein Arts Access Program, is generously funded by David and Alice Rubenstein.

Special thanks to The Harold and Mimi Steinberg Charitable Trust for supporting the John F. Kennedy Center of the Performing Arts' Kennedy Center American College Theater Festival.

Additional support is provided by The Honorable Stuart Bernstein and Wilma E. Bernstein; the Blanche and Irving Laurie Foundation; the Dr. Gerald and Paula McNichols Foundation; Beatrice and Anthony Welters and the AnBryce Foundation.

Kennedy Center education and related artistic programming is made possible through the generosity of the National Committee for the Performing Arts and the President's Advisory Committee on the Arts.

This production is entered in the Kennedy Center American College Theater Festival (KCACTF). The aims of this national theater education program are to identify and promote quality in college-level theater production. To this end, each production entered is eligible for a response by a regional KCACTF representative, and selected students and faculty are invited to participate in KCACTF programs involving scholarships, internships, grants and awards for actors, directors, dramaturgs, playwrights, designers, stage managers and critics at both the regional and national levels.

Productions entered on the Participating level are eligible for invitation to the KCACTF regional festival and may also be considered for national awards recognizing outstanding achievement in production, design, direction and performance.

Last year more than 1,300 productions were entered in the KCACTF involving more than 200,000 students nationwide. By entering this production, our theater department is sharing in the KCACTF goals to recognize, reward, and celebrate the exemplary work produced in college and university theaters across the nation.