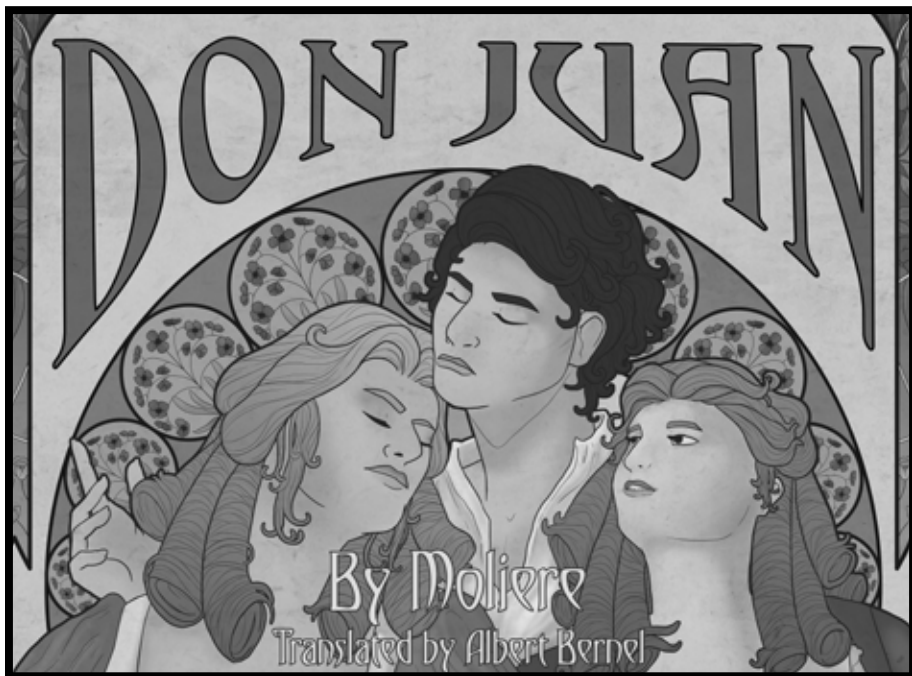


THE UW-PARKSIDE THEATRE ARTS DEPARTMENT PRESENTS



LEAD PRODUCTION TEAM

DIRECTOR

Brian Gill

SCENIC DESIGNER

Jody Sekas

ASSISTANT DIRECTOR

Gabby Ashlin*

COSTUME DESIGNER

Misti Bradford

LIGHTING DESIGNER

Michelle Housh*

SOUND DESIGNER

Karla Chavez*

MAKE UP DESIGNER

Destiny Kent*

PROPS MASTER

Alyssa Bencs*

STAGE MANAGER

Scarlette Kinderman*

TECHNICAL DIRECTOR

Zach Young*

(*) indicates student

“Don Juan (Bernel)” is presented by special arrangement with
SAMUEL FRENCH, INC.

DIRECTOR'S NOTES



The last part in Moliere's hypocrisy trilogy, which also includes *The School for Wives* and *Tartuffe*, *Don Juan*, or the *Feast of Stone* was an almost immediate failure. Originally produced in 1665, the play was withdrawn after only 15 performances. It would seem the playwright's critics took offense at his celebrating a legendary libertine. The play was so controversial that it would not appear in its original form again until 1683, ironically in Amsterdam, a city known for its more libertine leanings.

But what is it about the play that made so many so queasy? Hypocrisy. All of us are hypocrites (Moliere knew this well), and this play holds our feet to the fire of that truth. It is a study of what happens when those in power (in this case Don Juan) are devoid of any moral compass, their actions and beliefs dictated by the spontaneous need for gratification. "Whatever happens later – happens". Worse, it makes fun of those of us who tolerate such behavior provided our own needs are met. We may complain, we may even make halfhearted attempts to challenge the professional hypocrite, but in the end we "bow our heads, let out mortified sighs, roll [our] eyes a couple of times, and lo, all is forgiven."

And yet, the play is funny. Wickedly funny. A grand entertainment of patchwork oddities: slapstick comedy, mistaken identities, swordfights, philosophy, spectacle and romance all running headlong into an ultimate supernatural reckoning with an old enemy.

Thank you for coming to play with us.
I hope you enjoy the show.

Brian J. Gill
October 2017

CAST

Don Juan	Shane Richlen
Sganarelle	Jarrod Langwinski
Elvire	Riccarda Eickenberg
Gusman.....	Chelsea Strebe
Don Carlos	Kyle Racas
Don Alonse/Highwayman	Skylar Albaugh
Don Louis/Poor Man/Statue of the Commander.....	Alex Griffin
Charlotte	Hannah Anderson
Mathurine/Ragotin/Spectre/Highwayman	Rayne Kleinofen
Pierrot.....	Cody Summers
Dimanche	Maxwell Alexander
La Ramee/Highwayman.....	Nick Oleksak
La Violette	Heather Rock

PLACE

Sicily during the rule of Spain.

THERE WILL BE ONE 15-MINUTE INTERMISSION.

The videotaping or making of electronic or other audio and/or visual recordings of this production or distributing recordings on any medium, including the internet, is strictly prohibited, a violation of the author's rights and actionable under United States copyright law. For more information, please visit: www.samuelfrench.com/whitepaper

CAST BIOS



SKYLER ALBAUGH (*Don Alonse, Highwayman*) is in his second year at Parkside and is thrilled to be working and studying in the theatre arts department. Production credits on campus include the FreshINK reading of *Den of Thieves* (Sal) and *A Funny Thing Happened on the Way to the Forum* (Geminae). Other credits have included *The Tempest* (Caliban) and *Romeo and Juliet* (Romeo) at the Rhode Center for the Arts; he was also seen in *Rent* (Roger) through the Racine Unified School District.



MAXWELL ALEXANDER (*Dimanche*) is a junior in the Parkside theatre department with a focus in directing and acting. His performance credits include *A Streetcar Named Desire* (Mitch), *A Funny Thing Happened on the Way to the Forum* (Pseudalas U/S), *Macbeth* (Ensemble), and *Almost, Maine* (U/S). His technical work includes *A Christmas Carol: on the Air* (light board), *The Government Inspector* (Fly op) and *Hedda Gabler* (head of wardrobe).



HANNAH ANDERSON (*Charlotte*) is in her final year as a theatre arts major with a concentration in performance. Some of her previous acting credits include *A Funny Thing Happened on the Way to the Forum* (Miles Glorious), *A Streetcar Named Desire* (Blanche Dubois), *Macbeth* (Lady Macbeth), *The Government Inspector* (The Postmaster), *Hedda Gabler* (Hedda U/S), and *The Last Days of Judas Iscariot* (Gloria and Caiaphas).



RICCARDA EICKENBERG (*Elvire*) is a senior at Parkside with a focus in performance. Previous acting credits include *Othello* (Emilia), *The Tempest* (Gonzala), *A Streetcar Named Desire* (Blanche U/S, Ensemble), *Macbeth* (Ensemble). She also served the on the production team of *A Funny Thing Happened on the Way to the Forum* (Assistant Stage Manager).



ALEX GRIFFIN (*Don Louis, Poor Man, Statue of the Commander*) is in his senior year as a theatre arts major with a performance concentration. Parkside performance include credits *A Funny Thing Happened on the Way to the Forum* (Pesudolus), *The Last Days of Judas Iscariot* (El-Fayoumy), *The 25th Annual Putnam County Spelling Bee* (William Barfee), and *A Midsummer Night's Dream* (Nick Bottom).



RAYNE KLEINOFEN (*Mathurine, Ragotin, Highwayman*) is a senior at Parkside. She has been able to participate in many shows at Parkside such as *Hedda Gabler* (Thea U/S), *Almost, Maine* (Ginette and others), *25th Annual Putnam County Spelling Bee* (Logainne), *A Midsummer Night's Dream* (Puck/Philostrate), and *Arabian Nights* (swing). She has also had the opportunity to perform in The Rhode's *As You Like It* (Rosalind).

CAST BIOS



JARROD LANGWINSKI (*Sganarelle*) is a senior theatre arts major with a minor in communication. Productions at Parkside have included *Macbeth* (Banquo), *Hedda Gabler* (George Tesman), *Almost, Maine* (Pete and others) and *Middletown* (John Dodge). He spent the past summer working professionally at the Utah Festival Opera House in Logan, UT and looks forward to the opportunities he will explore upon graduation.



NICHOLAS OLEKSAK (*La Ramee, Highwayman*) is a theatre major at Parkside. He has been a part of the production team for shows since his freshman year and was also a producer/co-host and board operator for the Parkside sports radio show Run DMZ 101.5 WIPZ. Nicholas has also been in productions for KYPAC, I.T.H.S and recently was in the Rhode Center production of *Othello* (Cassio).



KYLE RACAS (*Don Carlos*) is in his second year working towards a theater arts major at Parkside, with a focus in performance. Kyle has been seen in *Midnight and Moll Flanders* (Captain, Jemmy) and *Bengal Tiger at the Baghdad Zoo* (Musa) as part of Parkside's FreshINK Series, as well as on our main stages in *A Streetcar Named Desire* (A Young Collector, Ensemble, U/S), and *A Funny Thing Happened on the Way to the Forum* (The Geminae).

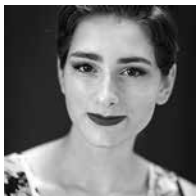


SHANE RICHLIN (*Don Juan*) is a senior at UW-Parkside. Previous acting credits here include *Macbeth* (Macbeth), *A Streetcar Named Desire* (Stanley), *The Government Inspector* (Dobchinsky), *The Last Days of Judas Iscariot* (Pontius Pilate, Butch Honeywell), and *A Funny Thing Happened on the Way to the Forum* (Hysterium U/S). Other credits include *The Importance of Being Earnest* (Algernon), and *Of Mice and Men* (Curley), both at UW-Marathon County. He has also performed at the Rhode Center in *A Midsummer Night's Dream* (Oberon, Theseus).



HEATHER ROCK (*La Violette*) is a senior this year studying for a theatre arts general degree. Heather graduated from Shoreland Lutheran High School and was involved in shows with Spotlight Kenosha. Shows credits include *Bengal Tiger at the Baghdad Zoo* Fresh Ink Series (Narrator), *The Sound of Music* (Nun), *Aladdin* (Lamp seller /Maiden), *A Midsummer Night's Dream* (Peter Quince), and *A Funny Thing Happened on the Way to the Forum* (u/s Miles Gloriosus and Erronius).

CAST BIOS



CHELSEA STREBE (*Gusman*) is beginning her second year with the theater arts department at Parkside. Chelsea began working in theater when she was 12 at DC Everest High school. She worked with community theaters such as Wausau Community Theater, Central Wisconsin Children's Theater, and Introspect Arts. She played roles in *Anne of Green Gables* (Marilla) and *The Sound of Music* (Leisel). Chelsea has also worked in various play workshops with Introspects arts, including a show called *Vanity*, which she was the co-playwright.



CODY SUMMERS (*Pierrot*) is a transfer from College of Lake County coming into Parkside for his junior year. *Don Juan* is his first show at UW Parkside. Previous work at CLC includes *The Tempest* (Ariel), *The Miser* (Cleante), and *Stinky Cheeseman and Other Fairly Stupid Tales* (Jack the Narrator).

COMING SOON

BOSWELL

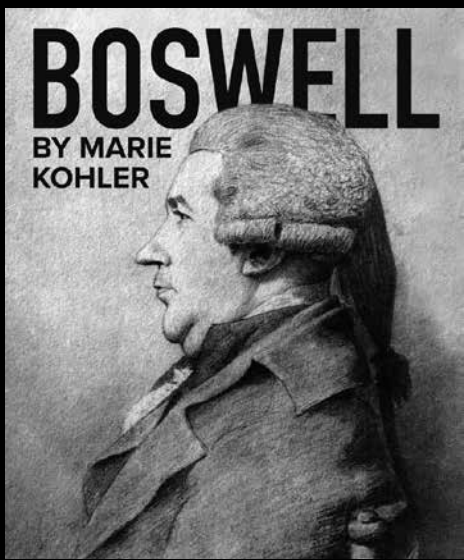
Written by: Marie Kohler

In the 1950s, a female graduate student's accidental discovery uncovers a now famous pilgrimage of two 18th century literary giants, Dr. Samuel Johnson and James Boswell.

Studio A, The Rita
Nov 10 & 11 | 7 pm

Fusion, Downtown Kenosha
Nov 11 | 2 pm

BOSWELL
BY MARIE
KOHLER



A FreshINK free staged reading

PRODUCTION TEAM BIOS



BETH ALBRECHT (*Charge Artist*) is in her final semester of her BA degree in theatre arts with a focus in design and technology for scenic artistry. She spent the summer working as a scenic artist apprentice at the Santa Fe Opera. She has previously worked as the assistant scenic designer for *The Few* at Milwaukee Chamber Theatre, *Robin Hood* at First Stage Children's Theatre, and as a scenic artist at PCPA - Pacific Conservatory Theatre. Her Parkside technical credits include: *A Streetcar Named Desire*, *The Government Inspector*, *Almost, Maine*, *The Last Days of Judas Iscariot*, *The 25th Annual Putnam County Spelling Bee*, and *A Midsummer Night's Dream* (charge artist); and will next be the scenic designer for *Angels in America*.



GABBY ASHLIN (*Assistant Director*) is in her final year at Parkside with a concentration in acting and focuses in directing and design. She has returned from Cumberland County Playhouse working as a scenic painter. Her production credits include *A Funny Thing Happened on the way to the Forum* (Charge Artist, Makeup Crew), *Macbeth* (Assistant Director), and *Almost, Maine* (Asst. Scenic Designer). Her acting credits include *A Streetcar Named Desire* (Eunice Hubbell), *A Christmas Carol: On the Air* (Ensemble), *The Government Inspector* (Judge), and *Almost, Maine* (U/S, Ensemble).



ALYSSA BENCS (*Props Master*) is in her senior year at Parkside. She is a theater major with a concentration in design and a minor in graphic design. She has been involved in *Hedda Gabler* (wardrobe crew head) and *The Government Inspector* (wardrobe crew head), *A Christmas Carol On the Air* (assistant costume designer), and the musical *A Funny Thing Happened on the Way to the Forum* (makeup and hair designer).



MISTI BRADFORD, USAA (*Costume Designer*) teaches courses in costume design, makeup, wig/hair design, crafts and properties, and principles of theatrical design, along with mentoring stage management students. Her most recent professional design credits include costume, makeup, and craft designs at the First Stage Children's Theatre, Utah Festival Opera and Musical Theatre in Logan, Utah; PCPA Theaterfest in Santa Maria, CA; Milwaukee Chamber Theatre; Michigan Shakespeare Festival; Summer Repertory Theatre in Santa Rosa, CA; the Pacific Repertory Opera, and the Sierra Repertory Theatre. Parkside, selected designs include costumes for *Macbeth*, *Government Inspector*, *Hamlet*, *Twelfth Night* (KCACTF certificate of Merit), and *Three Penny Opera*.

PRODUCTION TEAM BIOS



JAKE BRAY (*Sound Faculty Advisor*) has designed the lighting for theatre, dance, opera and television. Previous work at Parkside includes *Melancholy Play*, *The Taming of the Shrew*, and *A Midsummer Night's Dream*. Other credits include the world premier opera *Sundance*, and the Chicago premieres of *Stadium Devildare* and *Adrift*. He is currently a member of the faculty at The Prairie School.



KARLA CHAVEZ (*Sound Designer*) is a fourth year with a double major in theatre and spanish at Parkside with concentrations in sound and performance. Sound design credits include *How I Learned to Drive* at Parkside as well as *Othello* and *Dead Man's Cellphone* at the Rhode. Acting credits include *Kid's Kingdom* (Sylvia the Silly Step Sister of Cinderella) at the Bristol Renaissance Faire and *Taming of The Shrew* (Biondello) at Parkside.



NOAH FRYE (*Master Carpenter*) is a sophomore at Parkside majoring in theatre with a focus in design. He has worked on *Macbeth* and *A Christmas Carol* (projections), *A Streetcar Named Desire* (scenic crew), and *A Funny Thing Happened on the Way to the Forum* (spot light operator). Noah came from Antioch Community High School.



DARICE DAMATA-GEIGER (*Costume Shop Manager*) has over 40 years of professional and educational experience as a costume designer and costume lab supervisor. She earned her MFA in Theatre Design at Wayne State University in Detroit, MI, as a Hilberry Fellow. She served as the Costume Lab Supervisor at Northwestern University, prior to working at Parkside. While at Northwestern, she worked closely with professionals from the Chicago theatre community to create costumes and crafts for shows directed by such renowned directors as Frank Galati and Mary Zimmermann. Darice also has extensive costume design experience at such professional Chicago theatres as Pegasus Players, City Lit Theatre Company, The Famous Door Theatre, and The Next Theatre Company.



AWARD WINNING

The Parkside Theatre Arts program is the only arts program in the UW-System to win the coveted "Regents Award" for outstanding quality of education.

PRODUCTION TEAM BIOS



BRIAN GILL, AEA (*Director*) is a member of the theatre arts faculty serving as an Assistant of Performance and Head of Acting. He has been a professional stage actor for over 20 years, appearing at such theaters as Milwaukee Chamber Theatre, Milwaukee Shakespeare, Renaissance Theaterworks, First Stage, goats & monkeys (co-founder and company member) and Milwaukee Repertory. Chicago credits include: Goodman Theatre, Chicago Shakespeare Theater, Victory Gardens, Drury Lane Oakbrook, Remy Bumpo Theatre Company, Provision Theater, Apple Tree Theatre and Famous Door; Regionally Brian has performed at Theatre at the Center, the Illinois and Texas Shakespeare Festivals, Allenberry Playhouse, and the historic Ford's Theatre in Washington DC. He is also the narrator of over three-dozen audio books. Brian trained at Shakespeare's Globe Theatre as a member of the First International Artistic Fellowship, training and performing with Mike Alfreds and Mark Rylance. He received his M.F.A. from the University of Pittsburgh. Parkside theatre directing credits include *Book of Days*, *Hedda Gabler*, and *A Streetcar Named Desire*. He is a proud member of Actor's Equity Association.



KEITH HARRIS (*Building Manager*) has worked in education for thirty years. As the theatre manager, he has staged a minimum of 1,000 events, ranging from university and community events to national tours. His artistry and expertise have been seen on the Parkside stage in over 50 set designs. Keith's talent as a designer has been recognized with five Regional and one National Design Merit Awards, presented through the Kennedy Center's American College Theatre Festival. His regional design work includes the 2012 set for *Bus Stop* at the Milwaukee Chamber Theatre.



MICHELLE HOUSH (*Lighting Designer*) is a senior at Parkside, working on her theatre arts major with a concentration in management and direction. She has been involved in: *A Midsummer's Night Dream* and *Hedda Gabler* (assistant stage manager); *Mr. Marmalade*, *The Haunting of the Weave*, *Almost, Maine*, *Macbeth*, and *A Funny Thing Happened on the Way to the Forum* (stage manager); *The Government Inspector* (assistant lighting designer); and *A Christmas Carol on the Air* (lighting designer). She spent her summer as the assistant stage manager for *Beauty and the Beast* and *Twelfth Night* at PCPA - Pacific Conservatory Theatre.



DESTINY KENT (*Makeup Designer*) is in her fourth year at Parkside. This is her first time being the makeup designer for a show. Destiny's acting credits here include *Distracted* (Natalie), *Midnight and Moll Flanders*, *Den of Thieves* (Maggie), and *A Funny Thing Happened on the Way to the Forum* (Philia U/S).

PRODUCTION TEAM BIOS



SCARLETTE KINDERMAN (*Stage Manager*) is a senior at Parkside and currently working towards a theatre arts degree with a concentration in direction and management. She has worked on *The Government Inspector*, *Macbeth*, and *A Funny Thing Happened on the Way to the Forum* (assistant stage manager); as well as for *Murder by Poe*, *Distracted*, *Little Shop of Horrors*, *A Christmas Carol - On The Air*, *A Midsummer Night's Dream*, *Always...Patsy Cline*, and *Lisette Dances Divine* (stage manager).



JENNA EVE KLEINOFEN (*Assistant Stage Manager*) is a transfer student from the College of Lake County. She is excited to finally be involved with Parkside's theatre department! Previous credits include: *The Bandersnatch* and *Far Away* (stage manager), and *James and the Giant Peach* (assistant stage manager). Her onstage credits include: *Jekyll and Hyde* (Nellie) and *The Cherry Orchard* (Dunyasha) for which she received an Irene Ryan Nomination.



BEZZA LEGREVE (*Assistant Stage Manager*) is in her third year at Parkside. Her previous roles include *Murder by Poe* (Cat), *Distracted* (the Narrator), and multiple roles in *Midnight and Moll Flanders*. Most recently, she was the hair and makeup designer for *A Streetcar Named Desire*. She has also participated in the Drama Club's twelve-hour theatre festivals and is head of PR for Drama Club.



JODY SEKAS (*Scenic Designer*) is the Chair of the Department of Theatre Arts at UW-Parkside, and Associate Professor of Scenic/ Lighting Design & Technology. Prior, he taught Scenography in the Theatre, Film, & Dance Department at Humboldt State University in northern California; Scenic/Lighting Design & Technology at UW-Eau Claire, and for four years was the resident scenic & lighting designer for the Sioux Falls Playhouse in South Dakota. He has also worked as a freelance designer and technician for such venues as the Oregon Shakespeare Festival, First Stage Children's Theatre, Milwaukee Chamber Theatre, Dell'Arte International, Omaha Theatre Company for Young People, Utah Shakespeare Festival, and on several independent films.



NATE STAMPER (*Scenic Lab Manager*) graduated from Parkside with a BA in theatre arts. He has volunteered for local theatres and worked for professional theatres such as The Skylight Music Theatre, Next Act Theatre, the Fireside Dinner Theatre, and the Alabama Shakespeare Festival. He then went back to earn a teaching certification, working toward an M.A. in Teaching at Cardinal Stritch University.

PRODUCTION TEAM BIOS



JORDAN STANEK (*Assistant Scenic Designer*) is a theatre major, focusing on props, at Parkside in his junior year. He has contributed technical work and acting to a number of Parkside shows including *A Streetcar Named Desire* (props master) and *Don Juan* (assistant scenic designer). This past summer Jordan worked as a props artisan at PCPA - Pacific Conservatory Theatre in Santa Maria, California. He is excited to be back at Parkside bringing wonderful shows to audiences.



ALEXA USELMANN (*Scenic Artist*) is a junior majoring in theatre with a visual arts minor. She has served as a scenic artist on many shows since her freshman year, and was the charge artist for *Macbeth* last fall. Alexa had the opportunity to work as a scenic artist at Muhlenberg Summer Music Theatre in Allentown, Pennsylvania, over this past summer as her first outside scenic art job. She is very excited to be the charge artist for a few upcoming shows here at Parkside.



VERNON "CHIP" WEINKE (*Scenic Lab Foreman*) is a 1999 graduate of Parkside. His performance background includes roles in *Henry V*, Gregory in *Romeo & Juliet* and principle work on a Miller Beer industrial film. Chip's professional, behind the scenes work includes union stage crew work at The Milwaukee Ballet, Potawatomi Casino, and various touring road shows. He has also been involved in every Fireside Theatre Show since Christmas of 1994.



ZACH YOUNG (*Technical Director*) is in his final year as a theatre major with a concentration in design & technology. He recently worked as a props artisan at the Pacific Conservatory Theatre [PCPA] in Santa Maria, CA. His work at Parkside includes *A Streetcar Named Desire* (lighting designer), *Macbeth* (prop master), and *Hedda Gabler* (prop master), for which he was the Kennedy Center American College Theatre Festival regional winner for the Allied Design and Technologies award.



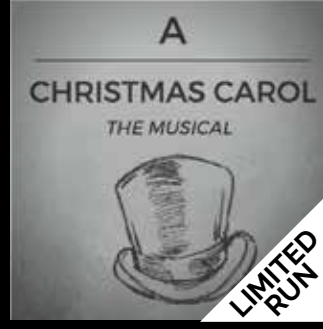
RYAN ZIERK (*Master Electrician*) is a senior at Parkside who is majoring in theatre arts. Ryan's performance credits include *South Pacific* (Emile De Becque), *It's a Wonderful Life: A Live Radio Play* (Male U/S, swing), *A Midsummer Night's Dream* (Lysander), *The 25th Annual Putnam County Spelling Bee* (Leaf Conebear), *The Last Days of Judas Iscariot* (Saint Peter), the staged reading *Murder by Poe* (M. Dupin), the staged reading *Distracted* (Dad), *The Government Inspector* (Ivan Hlestakov), *Macbeth* (Malcolm), and *A Funny Thing Happened on the Way to the Forum* (Hero).

PRODUCTION PERSONNEL

Assistant Stage Managers	Jenna Eve Kleinofen, Bezza LeGreve
Stage Management Faculty Advisor	Misti Bradford
Assistant Scenic Designer	Jordan Stanek
Scenic Charge Artist.....	Beth Albrecht
Scenic Artist.....	Alexa Uselmann
Master Carpenter	Noah Frye
Lighting Faculty Advisor	Jody Sekas
Master Electrician.....	Ryan Zierk
Sound Faculty Advisor.....	Jake Bray
Props Faculty Advisor	Jody Sekas
Hair and Make Up Faculty Advisor.....	Misti Bradford
House Manager.....	Bri Humke
Costume Shop Supervisor	Darice Damata Geiger
Scenic Lab Supervisor	Nathan Stamper
Scenic Shop Foreman.....	Vernon "Chip" Wienke
Light Board Operator	Matthew Rangel
Sound Board Operator	Olivia Jardas
Deck Crew.....	Akira Alston, Dominick Knox, David Marren Taylor Ramke, Rick Seng, Andrew Schurman, Kelsey Thomas
Wardrobe Supervisor	Lyric Simonson
Wardrobe Crew.....	Moises Diaz, Arianna Gilbeault, King Hang Jocelyn McGurk, Lauren Stoner
Makeup Crew.....	Beth Albrecht, Christianne Laskowski, Alexa Uselmann
Costume Shop Assistants	Bri Humke, Quinn Didier, Cole Garland, Alexa Uselmann
Scene Shop Assistants	Matt Rangel, Rayne Kleinoffen, Beth Albrecht, Zach Young
Scenic Paint Crew	Gabby Ashlin, Christianne Laskowski, Lyric Simonson Lauren Stoner, Kyle Racas
Scenic Construction Crew	Jordan Stanek, Zach Young, Skyler Albaugh Maxwell Alexander, Akira Alston, Riccarda Eickenberg, Tianna Field Germaje Ford, Noah Frye, Ariana Gibeault, Alex Griffin, Olivia Jardas Catherine Kleinofen, Talia Last, Shamoan Mian, Taylor Ramke Andrew Schurman, Joe Schwaller, Elizabeth Young
Props Crew	Alyssa Bencs, Ignasio Mercado, Penny Nichols Heather Rock, Cody Summers, Kelsey Thomas
Lighting Crew	Jessica Baker, Emily Bernhagen, Eamonn Higgins Samantha Feiler, Dominick Knox, Jarrod Langwinski, David Marren Hayden Nichols, Bayleigh Oberlander, Nick Oleksak Matt Rangel, Shane Richlen, Chelsea Strebe
Costume Construction Crew.....	Hannah Anderson, Kylah Collins, Moises Diaz Quinn Didier, Cole Garland, Bri Humke, Jocelyn McGurk, Sarah Severson
Technical Consultants	Jacob Komistra and Parker Jones
Marketing	Kim Sekas, Jennifer Sassaman
Program Layout	Kim Sekas
Poster Design.....	Enzo Daniels
Production Photographer.....	Alyssa Nepper
Department Administrative Assistants	Jennie Filippone, Joe Lambin Jared Holloway, Karen Sorensen, Diane Tenuta



OCT 20 - NOV 5, 2017



DEC 1 - DEC 17, 2017

JAN 12 - JAN 28, 2018



FEB 23 - MAR 11, 2018



APR 6 - APR 15, 2018



MAY 11 - MAY 27, 2018

262.633.4218
RacineTheatre.org

2519 Northwestern Ave.
Racine, WI 53404

DON'T MISS THE REST OF OUR GREAT SERIES



COMEDY
TONIGHT

Signature
SPOTLIGHT
Concert Series

JEAN'S
JAZZ

BE A S.T.A.G.E. CLUB MEMBER!

Did you know that nearly 100% of our production costs are covered solely by ticket sales and donations?

University and College support provides funding for a portion of production costs, but primarily, we rely on the support of our patrons to cover the expenses for sets, costumes, music, lights, and royalties. We are hoping that you help to support our work and consider a donation to the UW-Parkside Theatre and become a member of our S.T.A.G.E. Club (Society of Theatrical Angels, Gallivants, and Enthusiasts).

To become a member of the S.T.A.G.E. Club, simply make a tax-deductible gift to the UW-Parkside Theatre Arts Department (c/o UW-Parkside Benevolent Fund) at one of the following levels:

- Golden Archangel (\$3,000 and above)
- Archangel (\$1,000-\$2,999)
- Golden Angel (\$500-\$999)
- Silver Angel (\$200-\$499)
- Gallivant (\$100-\$199)
- Enthusiast (\$35-\$99)

There are two funds to which you can direct your tax-deductible donation:

Theatre Production Enrichment Fund: Funds contributed here are used to help cover production costs and further enhance and produce high-quality productions at UW-Parkside. Your contribution will go directly toward funding various aspects of our season.

Theatre Arts Talent Scholarship Fund: Funds contributed here are awarded to our most deserving new and continuing theatre students each year based on academic and artistic achievement. This important scholarship fund helps us to reward our best talent and to attract and support exceptional theatre students.

Please consider contributing. Contact Jody Sekas at sekas@uwp.edu or 262-595-2967 for more information.

Thank you for being part of our work!

S.T.A.G.E CLUB BENEVOLENT FUND

The UW-Parkside Theatre Arts Department wishes to thank the following individuals and businesses for their generous support.

Golden Archangel (\$3,000+)

The Fireside Theatre (Fort Atkinson)

Archangels (\$1000-\$2,999)

Julie Anding & Lisa Kornetsky Patricia Petretti
Donald Cress Maureen & Chris Potter
Virginia & Tom Hartley Runzheimer International
Harley Davidson Matching Gifts

Golden Angels (\$500-\$999)

Tom & Kim Cooper
Ken and Peg Lukow

Silver Angels (\$200-\$499)

David & Barbara Schneider

Theatre Gallivant (\$100-\$199)

Jacki Anderson Julie Rae Friedman
Dave Buchanan Mark & Courtney Marlair
Ruth Frear Sandy Moats
James Didier

Theatre Enthusiast (\$35-\$99)

Frances Bedford
Bill & Amy Chapin
Frances Kavenik
Doris Nice

SPECIAL THANKS

Claire Hicks for helping the cast with French pronunciations.
Casa Capri for ongoing support



The Kennedy Center

THE JOHN F. KENNEDY CENTER FOR THE PERFORMING ARTS

The Kennedy Center American College Theater Festival 49®, part of the Rubenstein Arts Access Program, is generously funded by David and Alice Rubenstein.

Special thanks to The Harold and Mimi Steinberg Charitable Trust for supporting the John F. Kennedy Center of the Performing Arts' Kennedy Center American College Theater Festival.

Additional support is provided by The Honorable Stuart Bernstein and Wilma E. Bernstein; the Blanche and Irving Laurie Foundation; the Dr. Gerald and Paula McNichols Foundation; Beatrice and Anthony Welters and the AnBryce Foundation.

Kennedy Center education and related artistic programming is made possible through the generosity of the National Committee for the Performing Arts and the President's Advisory Committee on the Arts.

This production is entered in the Kennedy Center American College Theater Festival (KCACTF). The aims of this national theater education program are to identify and promote quality in college-level theater production. To this end, each production entered is eligible for a response by a regional KCACTF representative, and selected students and faculty are invited to participate in KCACTF programs involving scholarships, internships, grants and awards for actors, directors, dramaturgs, playwrights, designers, stage managers and critics at both the regional and national levels.

Productions entered on the Participating level are eligible for invitation to the KCACTF regional festival and may also be considered for national awards recognizing outstanding achievement in production, design, direction and performance.

Last year more than 1,300 productions were entered in the KCACTF involving more than 200,000 students nationwide. By entering this production, our theater department is sharing in the KCACTF goals to recognize, reward, and celebrate the exemplary work produced in college and university theaters across the nation.